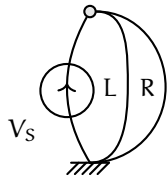


# graphs.exe Exercises for Chapter graphs

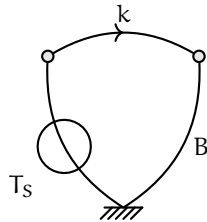
Exercise graphs.lillimoomie

Finish applying the sign coordinate arrows on the following linear graphs.

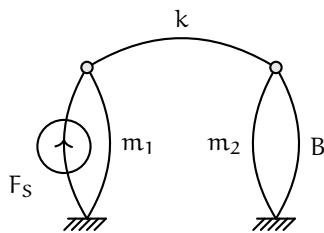
a. electronic system



b. rotational mechanical system (assume  $T_S$  is in the positive direction)



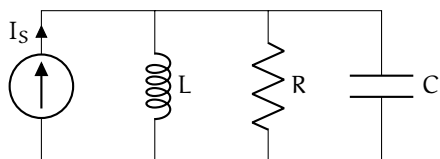
c. translational mechanical system



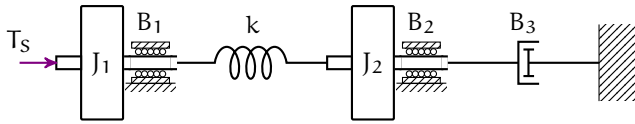
Exercise graphs.4

Draw necessary sign coordinate arrows and a linear graph for each of the following schematics.

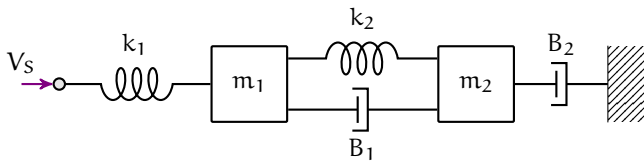
a. electronic system, current source



- b. rotational mechanical system, torque source



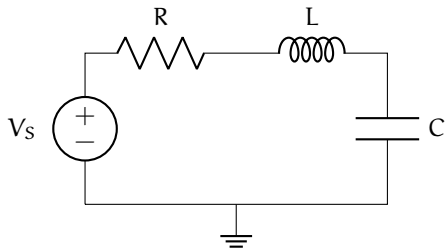
- c. translational mechanical system, velocity source



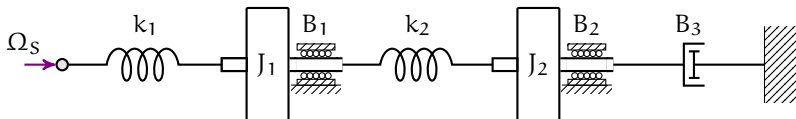
Exercise graphs.5

Draw necessary sign coordinate arrows and draw a linear graph for each of the following schematics.

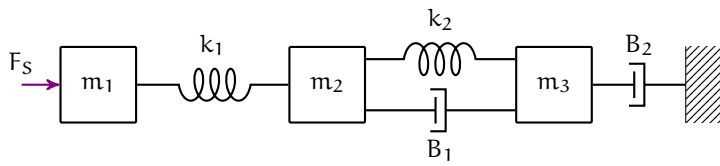
- a. electronic system, voltage source



- b. rotational mechanical system, angular velocity source



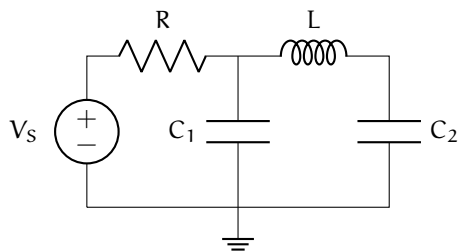
- c. translational mechanical system, force source



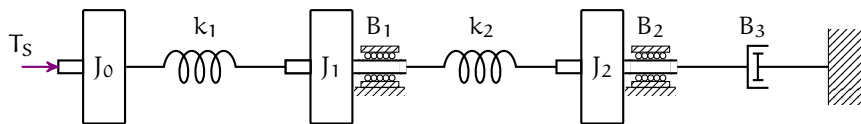
Exercise graphs.6

Draw necessary sign coordinate arrows and a linear graph for each of the following schematics.

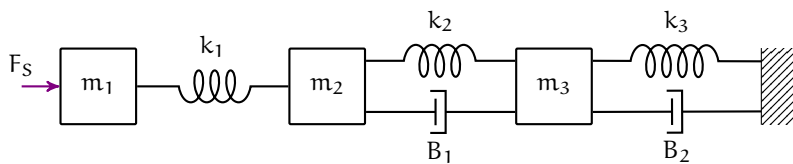
- a. electronic system, voltage source



- b. rotational mechanical system, torque source



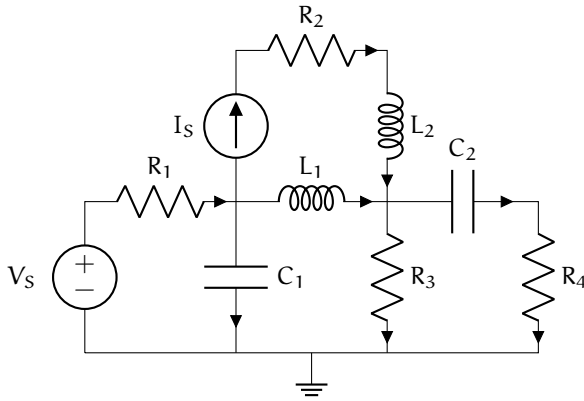
- c. translational mechanical system, force source



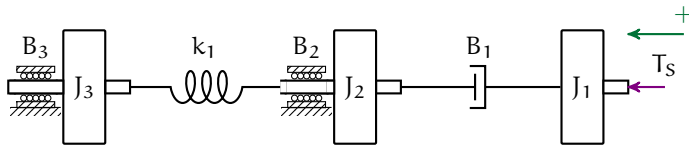
Exercise graphs.bunker

Use the assigned coordinate arrows to draw a linear graph for each of the following schematics.

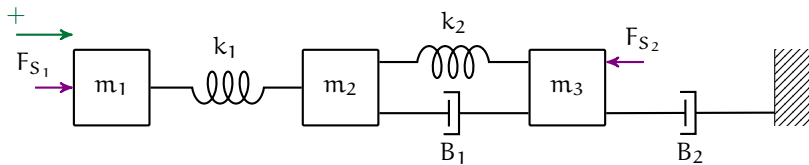
- a. electronic system, voltage and current source



- b. rotational mechanical system, torque source, coordinate arrow



- c. translational mechanical system, force sources (2)



---

# State–space models